

# LOG CABIN WITH A TWIST BLOCK INSTRUCTIONS

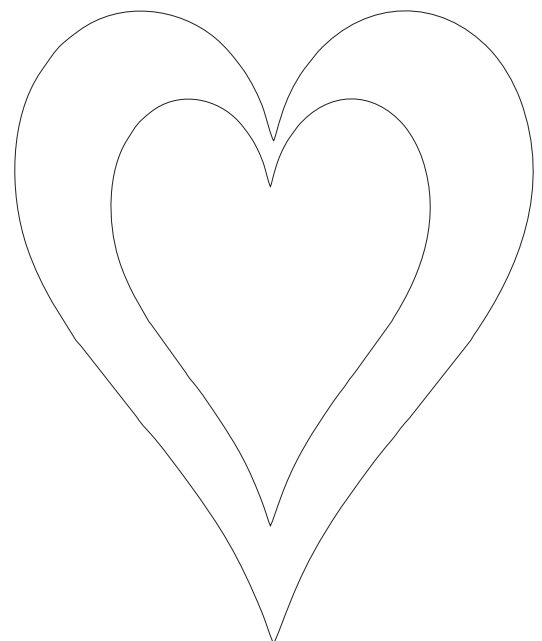
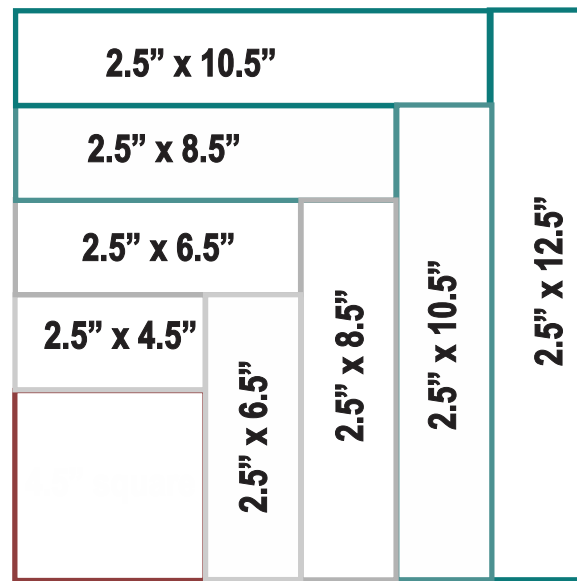
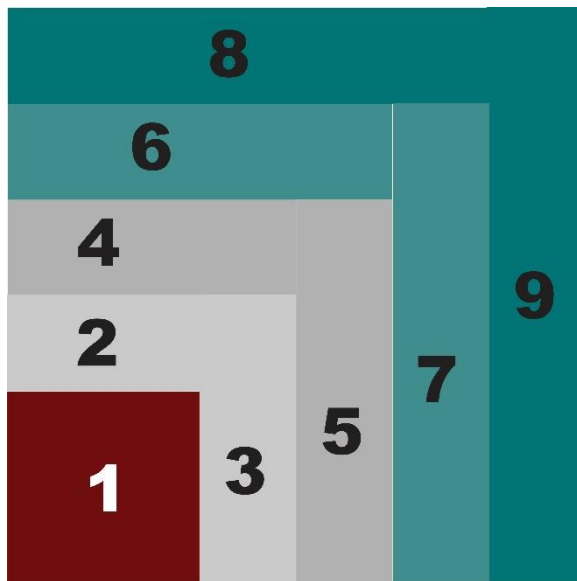
READ ALL INSTRUCTIONS BEFORE BEGINNING.

1/4" seam allowance was used throughout

September Quilt Block Mania's Block is a Log Cabin with a Twist. It has a large square in the corner and the colors are alternated instead of opposite each other. As additional feature, a heart with an Awareness Ribbon in teal was placed in the red square (the heart) to promote awareness for Ovarian Cancer throughout this month.

CUT FABRIC ACCORDING TO DIAGRAMS BELOW:

Beginning square is 4.5"



### APPLIQUE INSTRUCTIONS:

The templates are designed for 'raw edge' applique. If you are going to do 'needle turn' applique, you will have to add an extra 1/4" of fabric around the edges when cutting.

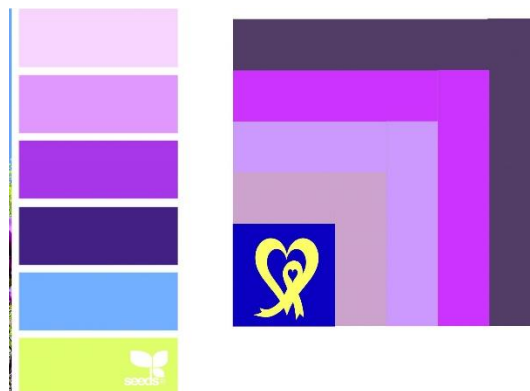
If you are planning on adding a fusible backing, follow the manufacturer's guideline for that brand. Also note the ribbon may need to be reversed, if using fusible.

You can choose to add your applique pieces to the square prior to sewing the strips, or you can wait until the block is completed.

### BLOCK ASSEMBLY INSTRUCTIONS:

1. Take strip #2 & stitch to the top of the square
2. Take strip #3 & stitch to the right side of pieces 1 & 2
3. Take strip #4 & stitch to the top of 2 & 3
4. Take strip #5 & stitch to the right side of 3 & 4
5. Take strip #6 & stitch to the top of 4 & 5
6. Take strip #7 & stitch to the right side of 5 & 6
7. Take strip #8 & stitch to the top of 6 & 7
8. Take strip #9 & stitch to the right side of 7 & 8

The color palette for this challenge block was supposed to be:



But because September is Ovarian Cancer Awareness Month, I chose to make my actual block in the TEAL colors.

You could make a pillow, table runner, or keep adding blocks to make a lap or larger size quilt.

